



---

# **TECHNICAL SPECIFICATIONS**

**State Theatre  
49 Market Street, Sydney**

Current as at January 2023

## **CONTENTS**

---

<b>Contact Sheet</b>	<b>2</b>
<b>Seating Capacity</b>	<b>3</b>
<b>Front of House Information</b>	<b>3</b>
<b>Disabled Access</b>	<b>3</b>
<b>Box Office</b>	<b>3</b>
<b>Audience Recall System</b>	<b>3</b>
<b>Showcase and Banner Info</b>	<b>4</b>
<b>Seating Plan</b>	<b>5</b>
<b>Stage Plan</b>	<b>6</b>
<b>Stage Specifications</b>	<b>7</b>
<b>Lighting Positions</b>	<b>8</b>
<b>Power Supply</b>	<b>9</b>
<b>Fly System</b>	<b>9</b>
<b>Fly Line Plot</b>	<b>10</b>
<b>Standard Theatre Equipment</b> (inclusive in venue hire)	<b>12</b>
<b>Equipment Hire</b> (lighting, audio, orchestra, risers, cinema)	<b>13</b>
<b>Dressing Rooms</b>	<b>22</b>
<b>Wardrobe</b>	<b>26</b>
<b>Kitchen &amp; Green Room</b>	<b>27</b>
<b>Loading In and Out</b>	<b>28</b>

# CONTACT SHEET

---

## **Administration**

General Manager	Mark Harris	+61 2 9373 6853
Client Services & Finance Manager	Maddison Honeyman	+61 2 9373 6852
Administration Fax		+61 2 9373 6537

## **Theatre**

Theatre Manager	Jillian Belfield	+61 2 9373 6864
Front of House & Marketing Manager	Beaver Garland	+61 2 9373 6847
Theatre Fax		+61 2 9373 6538
Food & Beverage Manager	Stuart Greene	+61 2 9373 6862
Maintenance Manager	Mody Assfour	+61 2 9373 6892
Box Office		+61 2 9367 3234
Box Office Fax		+61 2 9267 2329
Stage door		+61 2 9373 6872

## **Technical Contacts**

Production Manager	Catherine de Vries	+61 2 9373 6506 catherine_devries@statetheatre.com.au
--------------------	--------------------	--

Production Coordinator	Narelle Smith	+61 2 9373 6839 narelle_smith@statetheatre.com.au
------------------------	---------------	--

## **E Mail Address**

admin@statetheatre.com.au

## **Website**

www.statetheatre.com.au

## **Mailing Address**

State Theatre  
GPO Box 1609  
Sydney NSW 2000

## **Street Address**

49 Market Street  
Sydney NSW 2000  
(between George St and Pitt St)

The State Theatre is owned and operated by The Greater Union Organisation Pty Limited Australia.

ABN 99 000 024 439, 49 Market Street, Sydney, NSW, 2000.

## Seating Capacity

---

Capacity	2,034 seats
Stalls	828 seats
Mezzanine Lounge	426 seats
Dress Circle	780 seats (Front Section A-J 470 seats) (Upper Section K-P 310 seats)

### Standard Seat Withdrawals

Sound and lighting desk positions:	Stalls Row V17–29 Stalls Row W17-29
Followspot positions (centre)	Dress Circle P27-32 + O25
Owners Seats	Stalls G30-39, Mezzanine B24-27

**Standard Saleable capacity 1991 seats**

### **IMPORTANT INFORMATION**

Having treads from the stage to the auditorium requires certain seats to be taken out. Tread use and their configurations must be consulted and confirmed with the Operations Department **prior** to the seats going on sale. Please see the below tread configuration options and corresponding seat kills.

Centre treads: A28, 29, 30, 31.

Side treads: Prompt: A19, 20, 21, 22. Opposite prompt: A37, 38, 39, 40.

## Front of House Information

---

Merchandise counter & display facilities - Grand Assembly  
Five licensed bars  
Candy bar  
Public amenities on all levels

## Disabled Access

---

Level surface from street level to Mezzanine Foyer, 3-step ramp into auditorium

## Box Office

---

All ticketing is administered through The State Theatre Box Office using the computerised ticketing service of Ticketmaster (Australia) [www.ticketmaster.com.au](http://www.ticketmaster.com.au)

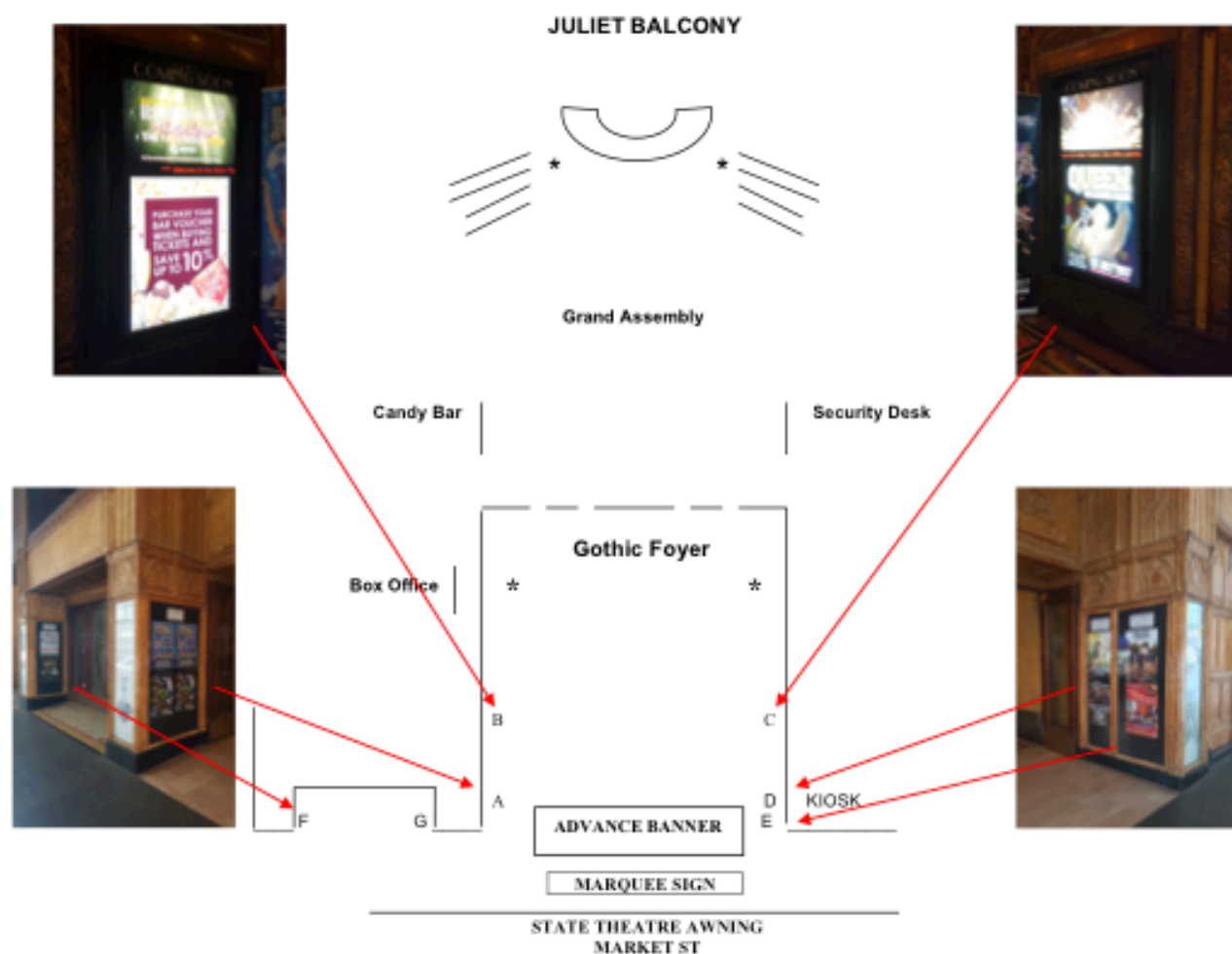
## Audience Recall System

---

Manually operated chime controlled by Front of House staff

# FOYER PLAN

## SHOWCASE AND BANNER MEASUREMENTS



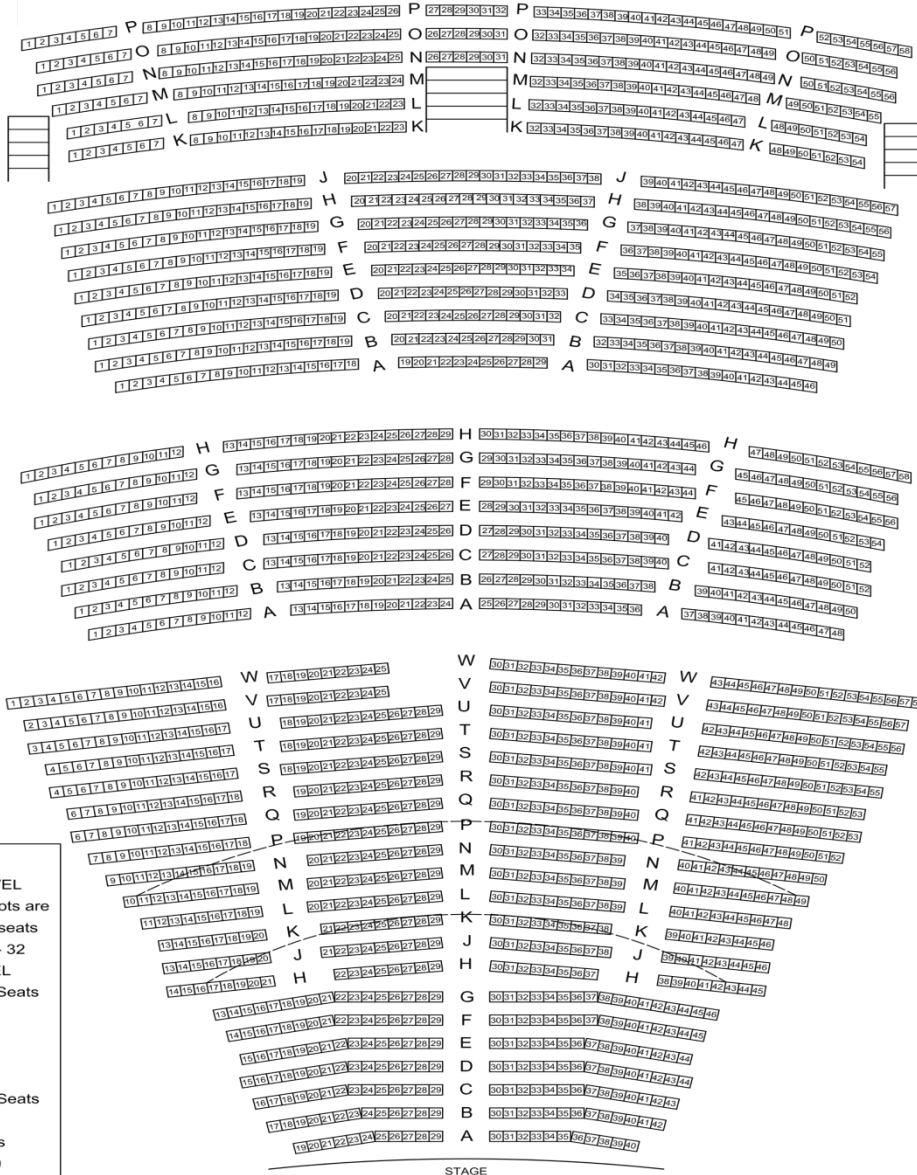
### Showcase Sizes

- A. W 990mm H 1730mm
- B. Digital Screen
- C. Digital Screen
- D. W 400mm H 1720mm
- E. W 640mm H 1720mm
- F. W 620mm H 1720mm
- G. W 630mm H 1740mm

### Other Positions

- Advance & Marquee Banner
- W 3150mm H 915mm
- Awning - Market Street
- W 27000mm H 1100mm
- Juliet Balcony – GA
- W 3300mm H 850mm
- Showcase – George Street
- W 415mm H 1770mm

# SEATING PLAN



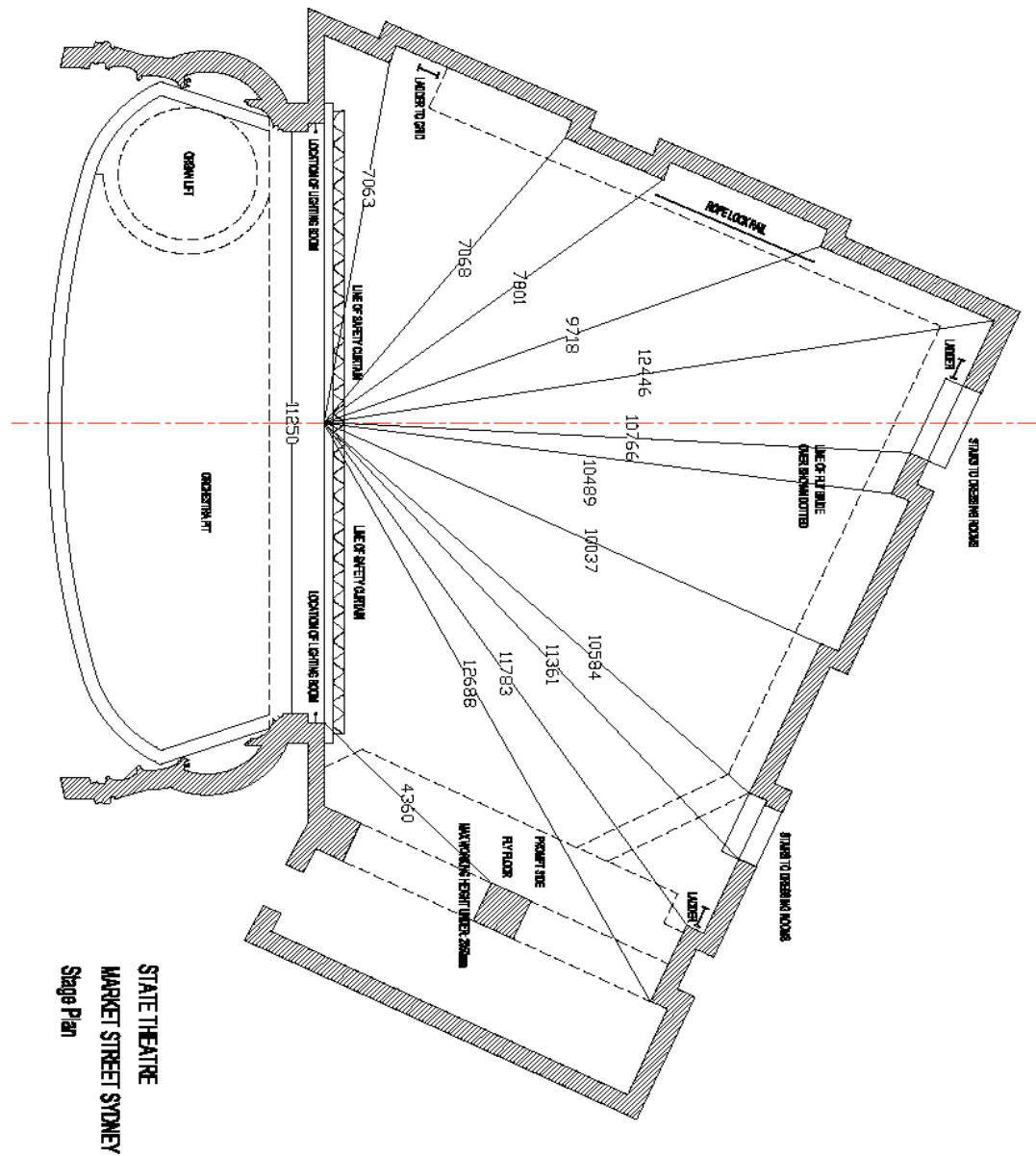
**Legend**

**DRESS CIRCLE LEVEL**  
If more than 2 follow spots are required the following seats are unavailable P27 - 32

**MEZZANINE LEVEL**  
State Theatre Owner Seats  
B24 - 27  
Disabled seating  
H13 - 29

**STALLS LEVEL**  
State Theatre Owner Seats  
G30 - 39  
Sound Mixer Seats  
W17 - 29, V17 - 29

Other  
stage  
plans



Available upon request in both PDF and DWG versions. Please contact State Theatre Technical Manager for more information.

# STAGE SPECIFICATIONS

---

## Stage Dimensions

### **Proscenium Opening**

Width	11300 mm
Height to bottom of Fire Curtain	8300 mm
Height to bottom of House Curtain	7700 mm

### **Depth**

From Back Wall to Setting Line	11600 mm
From last line set to Setting Line	9500 mm
From Setting Line to D.S. edge of Apron	4800 mm

### **Stage Height**

From Auditorium floor	1100 mm
-----------------------	---------

### **Grid**

Timber joists on steel	
Underside to stage surface	17000 mm

## Fire Curtain

Steel Drop directly upstage of Proscenium (see stage diagram on page 6)

***\*\*IMPORTANT\*\****

***Fire curtain line remain unobstructed at all times.  
Please ensure this accounted for in any stage planning***

## Stage Floor

<b>Surface</b>	Double layer plywood on wooden rafters, flat black
<b>Stage Rake</b>	Less than 1° (rise of 200 mm over 16400 mm)



## LIGHTING POSITIONS

---

### Dress Circle Rail

Throw to curtain setting line at centre stage	17500 mm
Vertical angle	Minimum 24°
30 Circuits - 10 amps each terminating in the dimmer area (1 level down – P.S.) Access for focus from front row Dress Circle	

### Dress Circle Box Boom # 1 (At Juliet Balconies)

Throw to curtain setting line at centre stage	18000 mm
Vertical angle	Min 24°, Max 40°
10 Circuits O.P.	
10 Circuits P.S. - 10 amps each terminating in the dimmer area (1 level down – P.S.)	
Access for focus from straight ladder	

### Dress Circle Box Boom # 2 (Opposite Row Dress Circle)

Throw to curtain setting line at centre stage	23000 mm
Vertical angle	Min 35°, Max 40°
10 Circuits O.P.	
10 Circuits P.S. - 10 amps each terminating in the dimmer area (1 level down – P.S.)	
Access for focus from straight ladder	

### Truss # 1

Throw to curtain setting line at centre stage	8000 mm
Down stage of curtain setting line	2500 mm
2 x hanging points from centre line of stage	5500 mm

### Truss # 2

Throw to curtain setting line at centre stage	10500 mm
Down stage of curtain setting line	5500 mm
2 x hanging points from centre line of stage	6300 mm

### Follow Spot Positions

2 x Platforms back row of Dress Circle	
Throw to curtain setting line at centre stage	35000 mm
Power outlet on Platform 5 pin WILCO 32 amp 3 Phase	
Single DMX line to Prompt corner	
3 x comms lines to Prompt corner	

### Lighting Desk Position

Back row of Stalls	Row V17 - 29 and W17-29
Area of above	2400 mm x 6200 mm
Control cable length from desk to racks	60000 mm
Distance of desk position to curtain setting line	28500 mm
4 x DMX lines to Prompt corner	
2 x comms lines to Prompt Corner	

## POWER SUPPLY

---

### Up Stage Prompt Side

Lighting – 400 Amp Powerlock. Tails 2m minimum.

Audio – 150 Amp Powerlock. Tails 2m minimum.

2 x 32 amp 3-Phase Wilco outlets, 1 x 55 amp 3-Phase Wilco outlet

### Down Stage Opposite Prompt

1 x 32 amp 3-Phase Wilco outlet

1 x 10 Amp GPO

### Foyer

Various 10 Amp GPO's are located around all the foyers and passageways

### Empire Builders Room

1 x 32 amp 3-Phase

3 Phase extension lead with 6 outlet distribution board

### Outside Empire Builders Room

2 x 15 amp

### Dress Circle Foyer

2 x 32 amp 3-phase located in cupboard near dress circle bar

### Green Room

1 x 32 amp 3-Phase with 6 outlet distribution board

## FLY SYSTEM

---

47 line sets

Lines 1 – 34 (Prompt Side) Single purchase counterweight system.

Lines 35 – 47 (Opposite Prompt) Double purchase counterweight system.

All lines complete with brake

All lines 48 mm O.D. steel pipe

Barrel travel = 1,500mm

### Lines 1-34 (Prompt Side)

Operated above stage level

Maximum length of barrel - (downstage)

12000 mm

Minimum length of barrel - (upstage)

8500 mm

Maximum cradle capacity

180kgs (*including bar weight*)

### Lines 35-47 (Opposite Prompt)

Operated above stage level

Maximum length of barrel - (downstage)

8000 mm

Minimum length of barrel - (upstage)

6500 mm

Maximum cradle capacity

150kgs (*including bar weight*)

## FLY LINE PLOT

Bar	Note	From Front of Apron (mm)	Centre to OP	Centre to PS
Fire Curtain		5,000		
1	House Curtain	5,150		
2		5,500	5,940	6,050
3		5,700	5,910	6,080
4	Cinema Masking	5,800		
5	Cinema Screen	6,000		
6	Unavailable	6,400		
7		6,550	5,880	5,980
8		6,700	5,840	6,470
9		6,850	5,780	6,420
10		7,000	5,690	6,530
11		7,150	5,330	6,680
12		7,450	5,300	6,770
13		7,600	5,520	6,900
14		7,950	4,940	7,070
15		8,100	5,120	6,340
16		8,250	4,790	7,230
17		8,300	4,924	7,085
18		8,450	4,920	7,195
19		8,600	4,870	7,185
20		8,750	4,695	7,105
21	Unavailable – LX Truss	9,050	4,680	6,488
22	Unavailable – LX Truss	9,200	4,550	7,525
23		9,650	4,240	7,195
24		9,850	4,260	7,525
25		10,000	4,180	7,405
26		10,100	4,150	7,055
27		10,250	4,100	7,000
28		10,400	4,000	6,930
29		10,550	3,800	6,800
30		10,700	3,650	6,630

<b>Bar</b>	<b>Note</b>	<b>From Front of Apron (mm)</b>	<b>Centre to OP</b>	<b>Centre to PS</b>
31		10,550	3,550	6,400
32		10,350	3,500	6,300
33		11,150	3,450	6,130
34		11,300	3,200	6,030
35		11,650	3,600	6,505
36		11,800	3,000	6,400
37		11,950	2,935	6,250
38		12,100	2,820	5,950
39		12,250	2,800	5,950
40		12,400	2,925	5,990
41		12,550	3,200	5,240
42		12,700	3,180	5,260
43		12,850	3,000	5,300
44		13,000	2,900	5,390
45		13,150	2,890	4,000
46		13,300	2,890	3,550
47		13,450	2,900	3,110

## **STANDARD THEATRE EQUIPMENT** (inclusive in Venue Hire)

---

### **Soft Goods**

QTY	DESCRIPTION	SIZE (mm)
1	House Curtain (Red with gold fringe, Guillotine Action – operated from PS fly floor)	
1	Flat Wool Border	2,800 x 14,500
3	Pleated Wool Border	2,000 x 11,000
1	Flat Wool Truss Border	900 x 17,000
1	Flat Wool Truss Border	950 x 12,000
1	Flat Wool Border	4,200 x 12,200
4	Pleated Wool Leg	9,000 x 2,000
6	Pleated Wool Leg	9,000 x 3,000
2	Pleated Wool Leg	4,200 x 12,200
1	Black Tab	9,500 x 9,200
1	Flat Wool Drop	9,000 x 12,000
1	White Cyclorama	10,000 x 9000
1	Black Sharkstooth	11,000 x 9,000

### **Mechanical Equipment**

1 x Genie Aerial Work Platform (Maximum Height 11m)

\*Please note the EWP is charged only if used and is exclusive of venue hire.

## **EQUIPMENT HIRE** (exclusive of venue hire)

---

Below is a range of standard equipment available for hire from the theatre. Prices available upon request.

Additional sound, lighting, vision and staging equipment can also be supplied – please contact the technical department for more information.

### **Audio**

#### **State Theatre – Full System**

---

##### **- FOH Speaker System**

---

- 22 Enc, L-Acoustics, dV-DOSC
- 8 Enc, L-Acoustics, dV-SUB
- 10 NL4, 100', Cable
- 12 Speaker cable, NL4, 132 ft - 040 m
- 15 Speaker cable, NL4, 002 ft - 000.7 m, link
- 2 Enc, case, (3) L-Acoustics dV-DOSC, Flight-dV

---

##### **- FOH Speakers - Subs & Infill**

---

- 2 L-Acoustics, 108P
- 2 Rig, L-Acoustics, ETR8-2, u-bracket (108P,108PW,8XT)
- 2 P-Series Power/Signal Loom, 080 ft - 025 m
- 2 L-Acoustics 115XT HI-Q
- 4 Enc, L-Acoustics, SB218

---

##### **- FOH Speakers - Rigging**

---

- 20 Rig, L-Acoustics, dV-ANGLESD, angle bar front dV-SUB
- 6 Rig, L-Acoustics, dV-ANGLESDP, angle bar rear dV-SUB
- 16 Rig, L-Acoustics, dV-ANGLESS, angle bar front / rear dV-SUB
- 24 Rig, L-Acoustics, dV-ANGLEP1, angle bar
- 36 Rig, L-Acoustics, dV-ANGLEP2, angle bar
- 6 Rig, L-Acoustics, dV-ANGLEN, angle bar
- 4 Rig, L-Acoustics, dV-ANGLE X, angle bar
- 200 Rig, L-Acoustics, dV-PIN25, QRP 25mm grip length
- 6 Rig, shackle-D, L-Acoustics, MAN18, 1.2t
- 2 Rig, L-Acoustics, dV-BUMP2, Fly & Stacking Bar for dV-Dosc/dV-SUB
- 2 Rig, L-Acoustics, dV-BUMP(HD), flybar dV-DOSC
- 2 Survey Tape 030 m
- 2 survey tape measure, metric & feet, 030m / 100'

---

##### **- FOH Amps**

---

- 2 Amplifier Rack, State Theatre (4xLA8)
- 1 Whirlwind Patch Panel, 2x W1 - 12x Female + 12x Male XLR
- 1 Whirlwind Patch Panel, 1x W1 - 12x Male XLR

#### **- FOH Speakers - Drive**

---

- 1 E-Rack, 21 space, JPJ
- 1 Norco 1ru 15.6" LCD Monitor + Keyboard, 8 port KVM
- 1 Apple, Mac Mini - System Image
- 1 Adapter, Apple, MB572Z/B, Mini Display Port > VGA
- 1 Computer, Sonnet, RackMac Mini enclosure for 2 Mac Mini computers
- 1 Tascam CD-RW901 CD Player/Recorder
- 1 Gateway, Motion kb1011 keyboard
- 1 X-OVER, CBA, tablet, Motion LE, 1700
- 1 X-OVER, CBA, iO, DOCKING ST, MOTION LE, 1200 / 1700
- 1 OmniTik 5-HnD POE Injector
- 1 Access point, OmniTik, 5-HnD 5Ghz Outdoor
- 2 Dolby Lake DLP8D8 Mesa EQ
- 1 USB Key
- 1 Gateway Motion 1200 Spare Stylus
- 1 Cable, JPJ, CAT 5e, 003 ft - 001 m
- 1 Cable, CAT 5e, 006 ft - 002 m
- 1 Cable, CAT 5e, 015 ft - 005 m
- 1 Targus DefCon Combination Security Lanyard
- 1 Atlas DMS-7E DeskTopTube
- 1 EQ, BSS, FCS-960, 2ch
- 1 4 space, rack drawer
- 1 3 Space Rack Drawer
- 1 Whirlwind Patch Panel, 2x W1 - 12x Female + 12x Male XLR
- 1 Whirlwind W1 12ch Header, 7m (Female XLR)

#### **- FOH Control**

---

- 1 Avid Venue Profile Control Surface
- 1 Avid Venue Profile FOH Local I/O Rack
- 2 E-Rack, 12 space, JPJ
- 1 Avid Venue Profile Stage Rack

#### **- Monitor Control**

---

- 1 Yamaha PM5D-RH Digital Mixing Console w/2 Power Supplies
- 1 Yamaha PM5000 Power Supply Rack
- 1 Jands TBM 2ch Master Station

#### **- Radio Microphones**

---

- 4 Shure, UR4D+-J5E, dual receiver, 579-638 Mhz
- 8 Shure UR2-J5E UHF handheld transmitter 579-638 Mhz
- 2 Shure RPW118 Beta 58A capsule
- 8 Shure WA371 HandHeld Mic Clip
- 2 Shure, ua-830wb, line amp ( 470-900MHz)
- 3 Shure UA 820A Antenna (J5 Band)  
1 x Spare;
- 2 Cable, RG8X, BNC-BNC, Antenna, 025 ft - 007.6 m
- 1 Cable, RG8X, BNC-BNC, Antenna, 050 ft - 015 m
- 8 Shure UR 1-J5E UHF Bodypack Transmitter 579-638 Mhz
- 1 RF, Shure #UA845-UWB, 5-Way Ultra Wide Band Antenna Splitter & Distro  
for UR, Axient Series receiver, Freqs 174-216MHz, 470-960MHz, 1240-  
1260MHz, 1492
- 4 RF, Headset Mic, DPA, Core 4088-F10, Directional Headset, Beige w/TA4F
- 4 DPA 4061-F omni lav element, beige, TAF4 connector  
lapel clip

#### **- Microphones**

---

- 1 Mic Accessories Drawers case (State Theatre)
- 6 Shure SM81 Cardioid Pencil Condenser Microphone
- 12 Shure SM57 Cardioid Dynamic Microphone
- 6 Mic, Shure, Beta 58A, Vocal, Supercardioid, Dynamic
- 1 Beyerdynamic M88TG Hypercardioid Dynamic Microphone
- 2 Sennheiser MD-421 Cardioid Dynamic Microphone
- 6 Direct Box, Klark Teknik, DN100, Mono, Active
- 2 Mic, Shure, 12A, Vocal, Cardioid, Dynamic, with Switch
- 6 JPS Patch Cable DI 1/4" Jack
- 1 Mic, Shure, Beta 52, Kick, Supercardioid, Dynamic
- 1 Mic, Shure, Beta 91, Boundary, Half-Cardioid, Condenser, w/ Preamp &  
Cable
- 4 Sennheiser e604 Tom Drum Cardioid Dynamic Microphone
- 8 Countryman DT85-FET Active Direct Box, Mono
- 2 Mic, Sennheiser, e606, Instrument, Cardioid, Dynamic
- 4 LP Drum Claw

#### **- Monitor Speaker System**

---

- 6 Clair 12AM monitor wedge
- 6 Clair 12AM monitor wedge
- 6 Clair 12AM case
- 2 Amp rack, 4mix 12AM (Crest)
- 2 Clair ML-18 sub-low speaker enclosure
- 1 Amp rack, ML18 (Crown MA9000i)
- 2 Cable, Sub Low Cable, 023 ft - 007 m (EP-4 to 2xNL4)



#### **- In Ear Monitors**

---

- 4 Sennheiser SR 300 G3-A, IEM transmitter 516-558 MHz
- 4 Sennheiser SR 300 G3-B, IEM transmitter 626-668 MHz
- 6 Sennheiser EK-300-G3-A IEM receiver, 516-558 MHz
- 6 Sennheiser EK-300-G3-B IEM receiver, 626-668 MHz
- 1 Sennheiser, AC 3000, 8-way ant comb, 470-870 MHz
- 1 JPJ 8way SR300 Power Supply
- 1 Sennheiser, UHF, passive directional antenna, 450-960MHz
- 1 Cable, RG213, N-Type, antenna, 50 ohm, 025 ft - 008 m

#### **- Sound Equipment**

---

- 1 FOH/Monitor Accessories Case (State Theatre)
- 1 Cables Case, Mic/Power/Mon (State Theatre)
- 1 Multi - Mic Stands Case (State Theatre)
- 3 Ratchet Strap 2" Less than 12m

#### **- Multicores**

---

- 1 Drive Multicore, L-Acoustics, State Theatre
- 1 Multicore, Burndy 60ch Input 330 ft - 100 m (State Theatre)
- 2 Signal cable, adapter, DOMF, male to 6x FXLR3 fan in
- 1 Signal cable, DOM50, female to female, 165 ft - 050 m
- 1 Transformer Isolation Block, 6ch XLR+Burndy Jensen 24db
- 4 Adapter, XLR splitter
- 4 Adapter, M-MXLR3, sex - changer, turnaround
- 1 Signal cable, adapter, DOMP, male to male
- 1 Signal cable, adapter, DOMM, female to 6x MXLR3 fan out

#### **- Comms**

---

- 1 Jands Ezicom E400 4ch Master Station  
*Lives in Venue Already there ;*
- 13 Clear-Com RS-501 Beltpack, 1 Channel
- 8 Beyer DT109 Dual Muff Headset (Beige)
- 6 Beyer DT108 Single Muff Headset (Beige)

#### **- Power**

---

- 1 AC Distro, Mains, 128A (4x40Amp Wilco)
- 1 AC Distro, 40A Wilco House
- 2 AC cable, Wilco 3phase, 075 ft - 025 m  
PA ;
- 1 AC Distro, Monitor III
- 1 AC cable, adapter, CEE 32A red male to Wilco 32A female
- 2 Wilco 32A male to CEE 63 A red female  
15m ;
- 1 AC Distro, PDS-6-16

#### **- Rigging**

---

- 2 Motor, Movecat 0.5 ton D8+, Wieland, 060 ft - 018 m chain
- 2 Wieland Chain Motor Cable, 30m

## **Live Multi-Track Recording Service** (exclusive of venue hire)

---

The State Theatre is one of Sydney's premier acoustic spaces and lends itself well to live recording.

The State Theatre is now able to offer a multi-track recording service.

Services include:

### Option 1

Multi-track record – wave files.

### Option 2

Multi-track record – wave files, plus a full re-mixed and mastered C.D

Record system consists of:

48 x Channels of ATI preamps.

2 x Tascam 48 hi-definition multi-track recorders



## **LIGHTING** (exclusive of venue hire)

<b>QTY</b>	<b>EQUIPMENT</b>	<b>NOTES</b>
<b>RIGGING</b>		
	<b>Front Truss</b>	
1	Box 18" 40'	4 x 3m truss pieces
2	Chain Motor	1 tonne
1	Motor Control	
1	Truss Border	13m x 600mm black wool
1	Safety Kit	Inertia reel & safety line
	Associated Rigging	All slings, shackles etc to suit
	<b>Rear Truss</b>	
1	Box 18" 32'	4 x 2.5m truss pieces
2	Chain Motor	1 tonne
1	Motor Control	Shared with front truss
	Associated Rigging	All slings, shackles etc to suit
	<b>Other Rigging</b>	
6	2m Steel Pipe	Black
6	Boom Base	On lockable castors
10	H Stands	Black
<b>LIGHTING</b>		
12	ETC S4 Profile 26 deg	750W
12	ETC S4 Profile 36 deg	750W
18	ETC S4 Zoom 15-30 deg	750W
8	S4 Iris	
12	S4 Gobo Holder	

	<b>Automated/LED</b>	
8	MAC Viper (Profile)	
14	MAC Aura LED Wash	
16	LED Quad Pars	Black
	<b>Effects</b>	
8	Molefay Duets	
2	Unique 2 Hazer	
	<b>Followspot</b>	
2	RJ Victor	1800W
	<b>Control</b>	
1	GrandMA 2 (Light)	
2	48 Way HP12 Jands dimmer	
1	24 Way HP12 Jands dimmer	
1	PDS 48 Way GPO Jands distro	
1	PDS 24 Way GPO Jands distro	
3	DMX 8 Way splitter	
1	Power lock wire in tails	

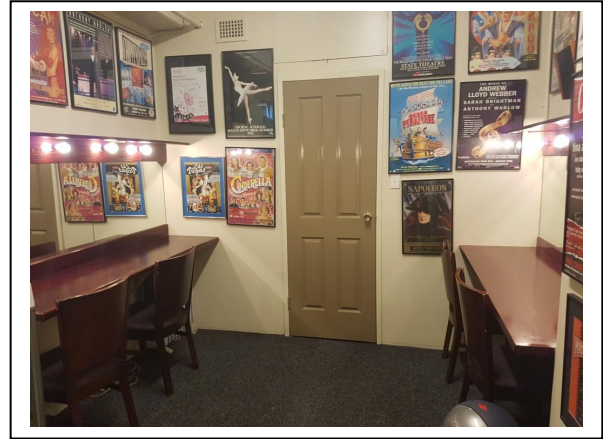
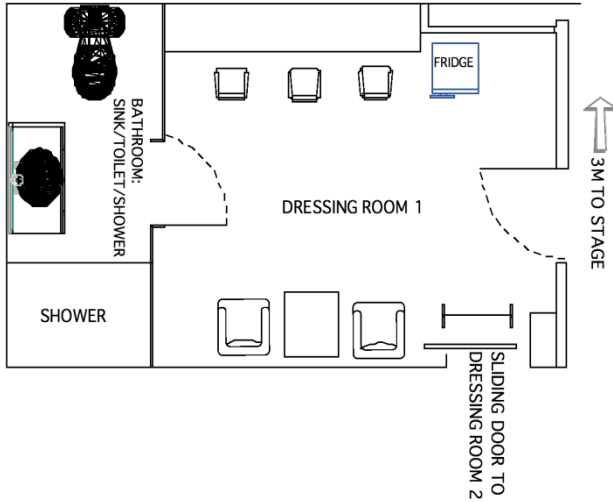
**OTHER**

QTY	EQUIPMENT	NOTES
ORCHESTRAL EQUIPMENT		
30	Music stands - black	Adjustable
	Chairs/stools	Various sizes and types
RISERS		
<i>**In-house stage decks currently unavailable**</i>		
CINEMA		
1	Barco DCP 2K-23B	Doremi DCP-2000
2	Cinemacanicca Victoria 8	5kw Zenon 35mm/70mm
2	Bauer 2.5kw Zenon	16mm - one with Double Head facility
	Dolby 6-track digital surround sound system	On all levels of auditorium
1	Projection Screen (matt white perforated)	12,000 x 6,000

# DRESSING ROOMS

Connected by Stairs on P.S.

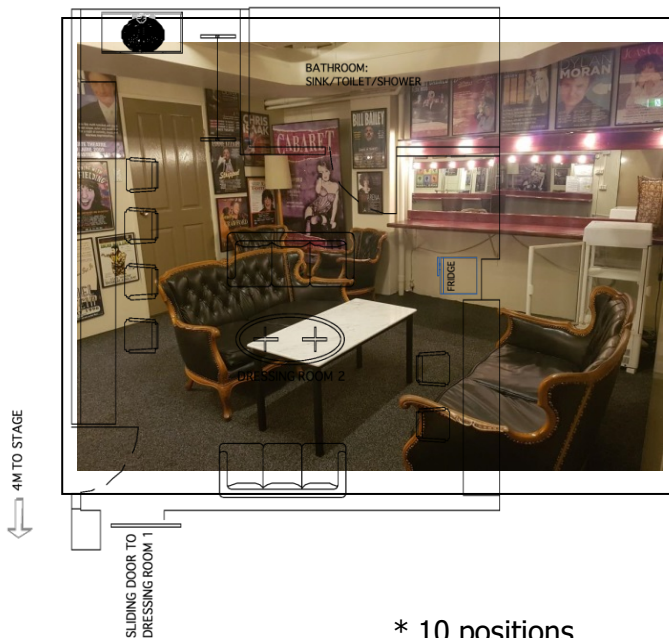
## Dressing Room # 1 (Stage Level)



- \* 3 Positions
- \* Approximate area 3500 mm x 3000 mm
- \* 1 sink, 1 toilet and 1 shower

- \* Nearest dressing room to stage
- \* Paging System

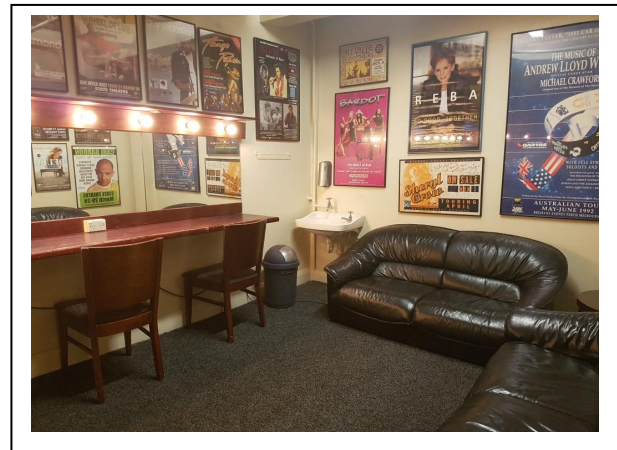
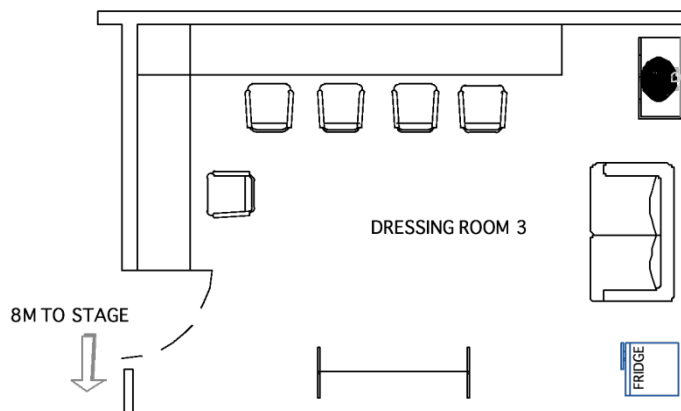
## Dressing Room # 2 (Stage Level)



- \* 10 positions
- \* Approximate area 6000 mm x 5000 mm
- \* 1 sink, 1 toilet and 1 shower

- \* Same level as stage
- \* Paging System

### **Dressing Room # 3 (Stage Level)**

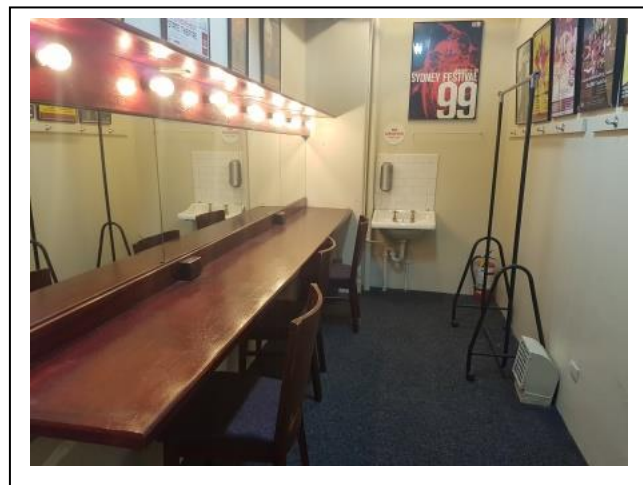
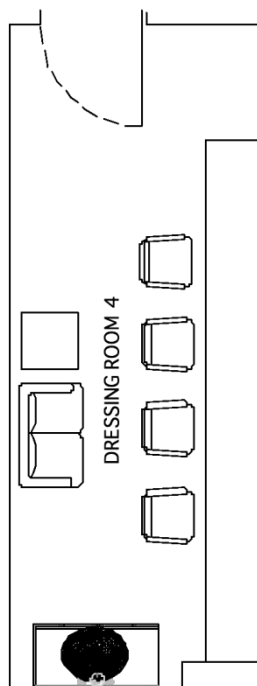


- \* 4 positions
- \* Approximate area 3300 mm x 4500 mm
- \* 1 sink

- \* Same level as stage
- \* Paging system

### **Dressing Room # 4 (1 level above Stage Level)**

← 30M TO STAGE

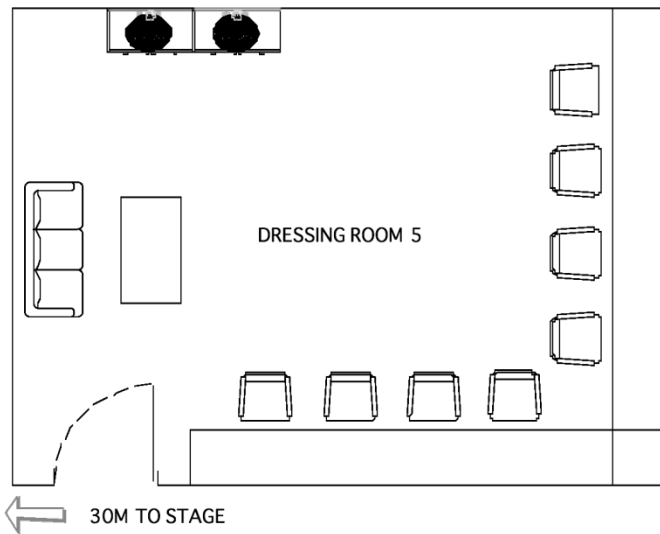


- \* 4 positions
- \* Approximate area 2000 mm x 6000 mm
- \* 1 sink

- \* 1 level above stage
- \* Paging System



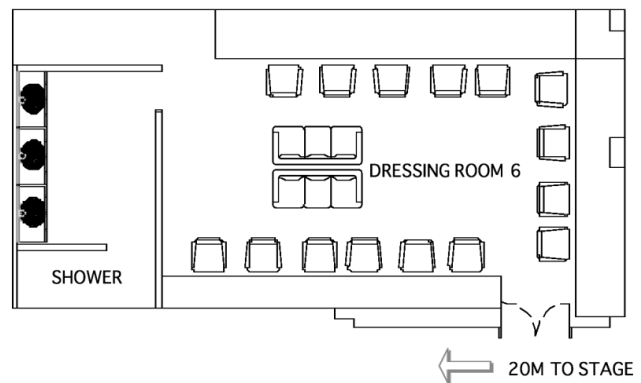
### **Dressing Room # 5 (1 level above Stage Level)**



- \* 5 positions
- \* Approximate area 3400 mm x 4500 mm
- \* 2 sinks

- \* One level above stage
- \* Paging System

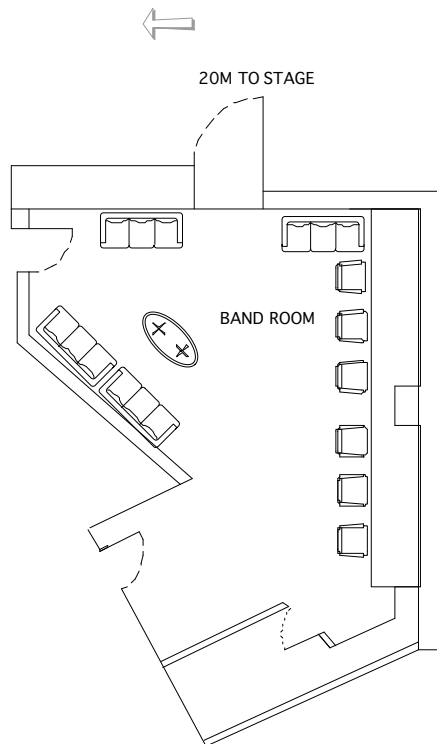
### **Dressing Room # 6 (1 level below Stage Level)**



- \* 20 positions
- \* Approximate area 10000 mm x 5000 mm
- \* 3 sinks, 1 shower

- \* One level below stage
- \* Paging System

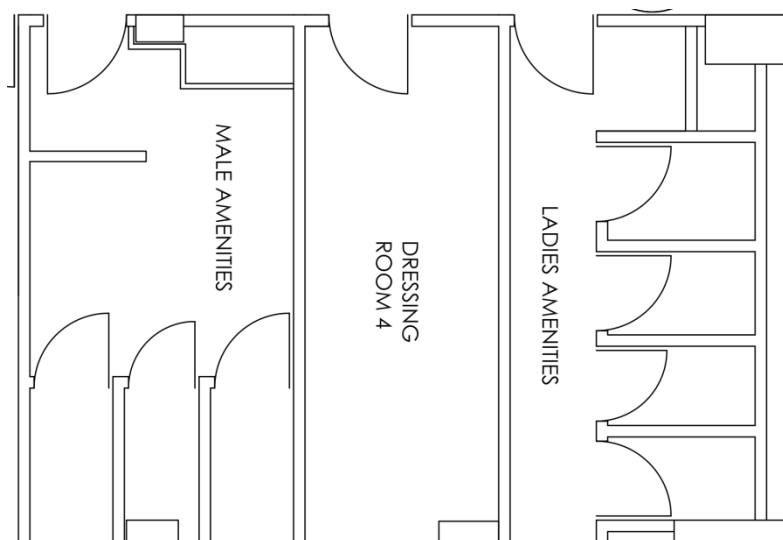
### **Band Room (1 level Below Stage)**



- \* No mirrors on benches
- \* Approximate area 2500 mm x 3200 mm

- \* One level below stage
- \* Paging System

### **Toilets (1 level above Stage Level)**



#### **Gents Toilets**

- \* 2 toilets
- \* 2 urinals
- \* 2 sinks
- \* 1 shower
- \* Paging System

#### **Ladies Toilets**

- \* 3 toilets
- \* 1 sink
- \* 1 shower
- \* Paging System

### **Wardrobe (1 level above Stage Level)**



- \* One level above stage
- \* Includes wig dressing area mirrors and lights

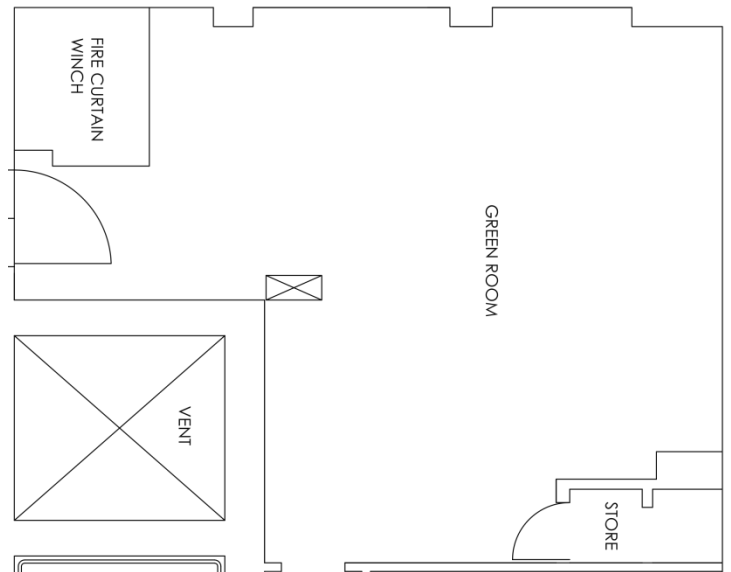
### **Equipment Included in Hire**

- 2 x Maytag Commercial Dryers
- 1 x Maytag Commercial Washing Machine
- 1 x Fisher & Paykel Top Loader Washing Machine
- 5 x Costume Racks
- 3 x Ironing Boards with Iron
- 1 x Steamer
- 1 x Stainless steel laundry tub
- 1 x Cutting/work table (1200 x 3000mm)
- Paging system

### **Power**

- 2 x 15 amp outlets Single Phase
- 4 x 10 amp outlets Single Phase

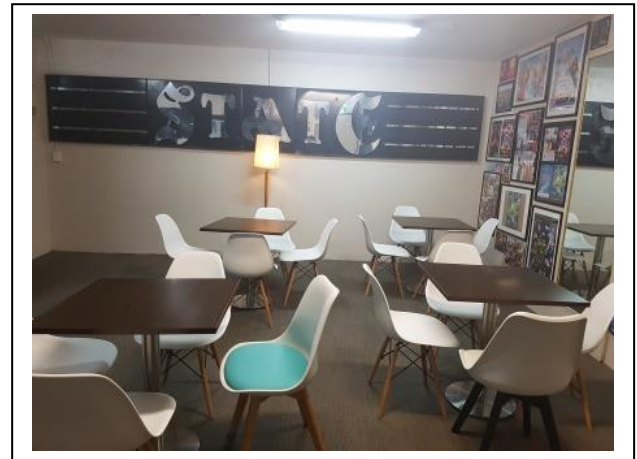
## Kitchen



- \* Stainless steel workbenches/shelves
- \* 2 x Large Fridges
- \* 1 x Ice Machine
- \* 1 x Sink

- \* Tables/Chairs as required
- \* Paging System

## Green Room



# LOADING IN AND OUT

## Market St Loading Zone



**Option 1:** Vehicles less than 3.2m are to enter Parlour Lane off Market St front end first, turn around once inside the dock and exit front end first. This is a shared loading dock, therefore all deliveries and pickups must be booked through the theatre 24hrs prior to arrival. Drivers are to call their onsite contact 10 min prior to arrival. This is a load and unload area **only**, there is no onsite parking available.

**Option 2:** Vehicles higher than 3.2m must unload from in front of the theatre on

Market St. All equipment is then to be transported to the loading dock via Parlour Lane.

### \*PLEASE NOTE

- Market St unload (option 2) can ONLY be accessed between hours of **10pm and 6am**
- Safety and security personnel are provided by the State Theatre.
- Gowings Lane opening (from Market St) = **3350mm wide x 3200mm high**

**IMPORTANT NOTE: THE LOADING DOCK AND THE PARLOUR LANE ARE USED AS FIRE AND SAFETY EGRESS WHEN THERE ARE PATRONS INSIDE THE STATE THEATRE. AT THESE TIMES THE LOADING DOCK AND THE GOWINGS LANE MUST BE KEPT CLEAR OF ALL VEHICLES UNLESS AUTHORIZED BY STATE THEATRE MANAGEMENT.**

## Goods Hoist (lowering equipment from street level to stage)

**REQUIRES 2 X CREW FOR ANY OPERATION – STRICTLY VENUE PERSONNEL ONLY**



Width	870mm
Height (outside edge)	1700mm
Height (highest point)	1900mm
Depth	1795mm
Safe Working Load 850kg	